



Sam. S.

Shubert  
Theatre

Boston

H.B.P.



"YOU CAN RELY ON LEWANDOS"



**CLEANSERS                      DYERS**  
**LAUNDERERS**

ESTABLISHED 1829

LARGEST IN AMERICA

High Class Work Returned in a Few Days

**LEWANDOS**

BOSTON SHOPS

**17 TEMPLE PLACE and 284 BOYLSTON STREET**

Phone 555 Oxford

Phone 3900 Back Bay

BRANCH SHOPS

Brookline

1310 Beacon St

Phone 5030

Watertown

1 Galen St

Phone Newton North 300

Cambridge

1274 Massachusetts Ave

Phone Cambridge 945

Roxbury

2206 Washington St

Phone Roxbury 92

Lynn

70 Market St

Phone 1860

Salem

187 Essex St

Phone 1800

ALSO

New York Albany Rochester Philadelphia Washington Baltimore Hartford New  
Haven Bridgeport Providence Newport Portland Worcester Springfield

EXECUTIVE OFFICES 286 BOYLSTON STREET BOSTON

"YOU CAN RELY ON LEWANDOS"

# Prince George Hotel

GEORGE H. NEWTON, Manager

Formerly of

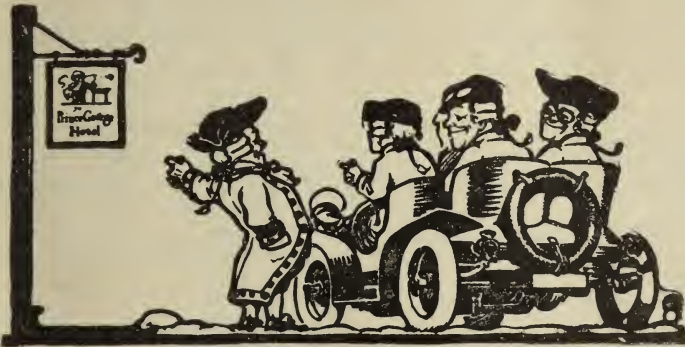
PARKER HOUSE, Boston, and FIFTH AVENUE HOTEL, New York

Fifth Avenue and Twenty-eighth Street  
NEW YORK CITY

One of the Most Beautiful Appointed Hotels in New York

600 ROOMS

Every bedroom equipped with bath and shower. All modern conveniences. Cuisine unequalled. Prices Unequaled. In the Center of Shopping and Theatre District. Elevated and Subway Station one block distant.



Room and Bath, One Person, \$2 and up    Room and Bath, Two Persons, \$3 and up  
Parlor, Bedroom and Bath, \$5 and up

**J. B. HUNTER & CO.**  
**HARDWARE**  
**60 SUMMER ST., BOSTON**

ONE BLOCK FROM WASHINGTON STREET



HUNTER DOLLAR RAZOR

The Only HIGH-GRADE Razor Selling for \$1.00

**T  
O  
O  
L  
S**

**C  
U  
T  
L  
E  
R  
Y**

**FISHING TACKLE**  
**KODAKS**





# LA PATRICIA CORSET

Strictly custom made and is particularly designed for the woman who desires firmness combined with flexibility.

We especially recommend our "Tricot" model as fulfilling these requirements and adding grace and beauty to the gown for which it makes a fitting mould.

Made from the raw material to finished product under the personal supervision of Madame Sara.

Fitted and altered Free-of-Charge.

120 BOYLSTON STREET  
BOSTON

Telephone 4386-R Oxford

The Toilet of Princess  
Marguerite of Valois 1572

4 WEST 33D STREET  
NEW YORK CITY

## Wm. E. Doyle Co., Inc. ...FLORISTS...

306 Boylston Street, 6 Beacon Street

### SPECIALTIES

Roses, Orchids, Violets and Gardenias

## THREE SPECIAL VICTOR-VICTROLA HOME OUTFITS

Pooley Cabinets Used

\$77.<sup>00</sup>-\$84.<sup>00</sup>-\$109.<sup>00</sup>

Call and See Them, Terms Quoted

## THE NEW EDISON DISC PHONOGRAPH

Is Ready for Your Inspection

Recitals Daily and Demonstrations  
by Appointment

## Geo. Lincoln Parker

100 BOYLSTON STREET, Third Floor

Krakauer, Emerson and Estey Pianos  
Sommer-Cecilian Players. Connorized  
and Rythmodik Player Rolls  
Victrolas and Records

## After the Performance *Delicious Soda*

With Fresh Fruit Syrups

Quality, Apollo, Schrafft's and  
Park & Tilford Chocolates

## Green's Pharmacy

232 TREMONT ST., COR. ELIOT ST.

# GOLF

Now is the time to have your clubs  
gone over to be ready for play

OUR

## SPECIAL REPAIR DEPT.

Insures the Best Work

See the New Ray Mills Putter

ARTHUR L. JOHNSON CO.

180 DEVONSHIRE ST., BOSTON, MASS.

## THEATRE TICKETS

JOHN R. HEARD

HOTEL TOURAINE, TEL. OXFORD 644



THE SUN PARLOR

## HOTEL PURITAN

Commonwealth Avenue 100 Yards West from Massachusetts Avenue

*The Distinctive Boston House*

**NEW CAFÉ AND GRILL ROOM JUST OPENED**

*Afternoon Tea, with Music, in the Sun Parlor*

*Kuyler's*

DINNER CANDIES

Bonbons

Chocolates

MARSHMALLOW FUDGE

146 Tremont St.

414 Boylston St.

Court and Washington Sts.

BOSTON, MASS.

Walpole

NO  
STONE BRUISE

TIRES

GUARANTEED FOR

4000 Miles

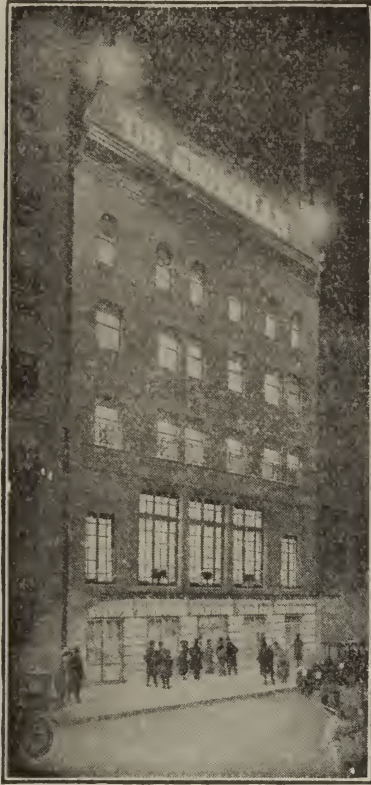
**SERVICE**

Walpole Tire and Rubber  
Company

757 Boylston Street, Boston

'Phone B. B. 5780





BOSTON'S UNIQUE PLACE

TO LUNCH, TO DINE, TO SUP

# The Georgian

PARK SQUARE

DIRECTION OF GEORGE A. DODGE

*After the Theatre*

Visit This Distinctive Dining Place  
You may order from the  
Menu or Wine List

*until 12 o'clock*

Table d'Hote Lunch, 75 Cents

Sunday Table d'Hote Dinner from 12 M. to 8 P. M., in addition to  
the la carte service, \$1.50

Sunday Orchestral Recital, Afternoon and Evening

Nightly in the Balcony only, from 6 P. M. to 8.30 P. M., Table  
d'Hote Dinner, \$1.50

THE GEORGIAN SYMPHONIC ORCHESTRA

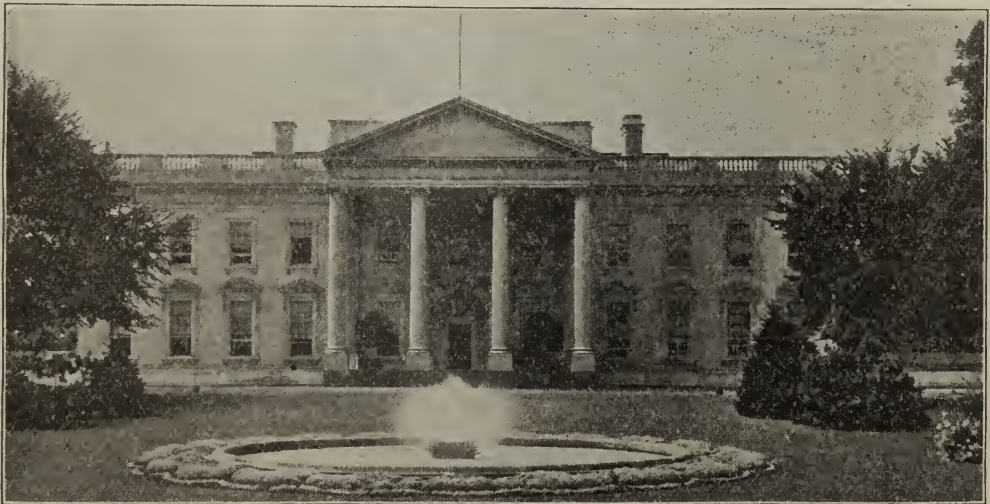
Augmented by the Marimba Band of Guatemala Serenaders

BACHELOR APARTMENTS

Telephone, 44560 Oxford

## WHITE HOUSE PURE GINGER ALE

FEATURED IN THE GEORGIAN WINE LIST



STANDARD BOTTLING & EXTRACT COMPANY

BOSTON, MASSACHUSETTS

# SUMMER RUGS AT PRAY'S

QUALITY is our watchword, and LOW PRICES on dependable merchandise make our establishment the Mecca of discriminating purchasers of Floor Coverings.

## Crex Rugs

For use indoors and on porches.

18x36.. .35	54x90..2.35
24x48.. .65	6x9 ..3.75
27x54.. .75	8x10..5.75
30x60.. .85	9x12..7.50
36x72..1.25	Matting .40

## Old Town Rugs

Artistic designs and colorings, made of new rags and very appropriate for summer use.

24x36.. .70	4x7...3.00
27x54..1.10	6x9...5.25
30x60..1.25	8x10.. 8.00
36x72..1.75	9x12..10.00

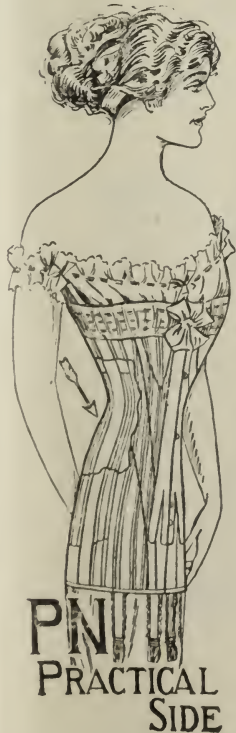
## India Druggets

Camel ground, with detached and geometrical figures.

3x6.. 6.75	6x9...20.00
4x7..10.00	9x12..40.00

# JOHN H. PRAY & SONS CO.

646-650 Washington St., opp. Boylston St.



Trade **P. N.** Mark  
**CORSETS**

For  
**Medium and  
Stout People**

For sale at all  
**Department Stores**

## Motokloth

Expression from the Press during the recent Boston Automobile Show:

**Newest Fabric  
is Attracting Many**

Among the Accessory Exhibits, one which attracts much attention at the Auto Show is that of MOTO-KLOTH, made by the Earnsdale Worsted Company of Clinton, Mass.

This Cloth is a specially woven, pure worsted wool upholstery fabric for all types of Motor Cars, originated by a Mill famous for its Pure Worsted Fabrics and the result of many years' experience.

It is woven by a special process from long fibre, pure Australian wool; made up into exquisite patterns heretofore impossible to obtain; impervious to sun, rain or weather conditions of any kind; colors fast; practically dustproof; cool in hot weather and warm in cool weather. It is equally desirable for Runabout, Phaeton, Coupe, Limousine, and especially for Touring Cars; the equal in every respect, and superior in many respects, to Leather; one of the most important steps ever developed in Motor Car construction; serviceable, dependable, handsome and stylish; a comfort and delight always.



# T.E. MOSELEY CO.

## SPRING OPENING

NOVEL AND EXCLUSIVE DESIGNS IN LOW EFFECTS



Dressy Pumps and Colonials in Tan, Black, Taupe Suede, Bronze Kid and White Buck.

Outing Shoes in White Buck, Canvas and Tan Calf, High and Low.

*Louis Cuban Heels and cut-steel buckles lend grace and distinction to this new Moseley model.*

*Purchases of \$5.00 and upward delivered free to all parts of New England.*

\$5 \$6 \$7 \$8

T. E. MOSELEY CO., 160 Tremont Street, Boston

LIMOUSINES  
TOWN CARS

TOURING CARS  
TAXI CABS

TELEPHONE  
BACK BAY

5 5



**TAXI-SERVICE CO.**  
**BOSTON CAB CO.**

### STANDS

Touraine, Parker House, Youngs, South Station  
Thorndike, Lenox, Shawmut Bank, Lansdowne St.



# THE NEW SAM S. SHUBERT THEATRE

Tremont and Hollis Streets . . . Boston

America's Newest and Most Magnificent  
Playhouse . . . Absolutely Fireproof

SHUBERT HOLDING CO. Proprietors  
SHUBERT THEATRICAL CO. Lessees & Managers  
EDWARD D. SMITH Resident Manager

Evenings . . . . . at 8  
Matinees . . . . . at 2

## EXECUTIVE STAFF

David Finestone . . . Business Mgr. and Treas.  
John W. Luce . . . . . Press Representative  
A. B. Craig . . . . . Stage Manager

The telephone number of this theater is 3022 Oxford.

Tickets for this theatre can be ordered by telephone, mail, or telegraph, and will be held 24 hours, except when ordered on the day of the performance for which they are to be used, in which case they will be held until 12.30 p. m. for matinees, and 7 p. m. for evenings. Tickets ordered and paid for by mail will be held until called for, unless otherwise ordered.

Ladies' Retiring Rooms are located at the right on entering the main foyer, and at the right on entering the first and second balcony foyers.

Smoking and Gentlemen's Retiring Room is located at the foot of the stairs at the left on entering the main foyer. Check Room for Ladies or Gentlemen, right of main foyer.

Ticket office open from 9 a. m. until after the close of the evening performance.

The admission of children under five years of age is optional with the management.

Parties finding lost articles in any part of the theatre will please leave them at the ticket office or with the chief usher.

The management invites information of any incivility or inattention.

Mail orders will at all times receive prompt attention if they are accompanied by certified check, postal or express order. If party desires tickets mailed, self-addressed return envelope must accompany order, thus avoiding possibility of error. Special attention will at all times be given to out-of-town orders. Tickets will be selected as near the desired location as possible at the time the orders are received.

Perfect sanitary conditions are maintained in this theatre by use of Chloro-Naphtholeum and the Formaldehyde Protectus Disinfecting Appliances of the West Disinfecting Company, Boston, Mass.

The lighting fixtures for the Shubert Theatre were especially designed and manufactured by Bigelow, Kennard & Co., 511 Washington Street.

The decorations, draperies, and wall hangings for the Shubert Theatre were furnished by Pennell, Gibbs & Quiring Company.

The drinking water served to the theatre patrons is purified by the system of the Boston Filter Co.

S. A. Lincoln Co., publishers of the Shubert, Majestic, and Globe Theatre programs, 415 Colonial Building, 100 Boylston St. Telephone, Oxford 3.

The Electric Lighting Fixtures and Fireplace Goods used on stage settings are from McKenney & Waterbury Co., 181 Franklin St., cor. Congress.

The Oliver Typewriter used in this theatre.

# TYSON

Best Seats All Theatres

## COPLEY-PLAZA HOTEL

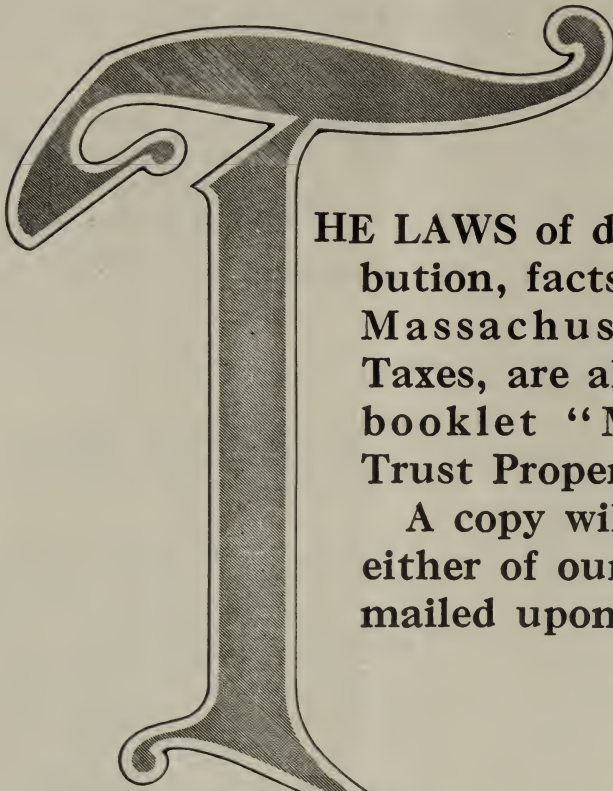
KEY NUMBER. 5870 'BACK BAY

### *"The Know How"*

It takes more than a good light, a good camera and a sitter to make portraits. All of these, plus artists who put all their experience and inborn ability into the "snap" and who know how to shave a second to give your pose just the values that distinguish your photograph from the average. Some cannot appreciate the difference. For those who do—Purdy prints possess unusual charm.

OUR NEW STUDIOS with their perfect facilities promise the finest work we have ever offered, and every day proves it.

145 Tremont Street



**THE LAWS** of descent and distribution, facts about wills, the Massachusetts Inheritance Taxes, are all outlined in our booklet "Management of Trust Property."

A copy will be given you at either of our offices or will be mailed upon request.

**Old Colony  
Trust Company**

**Court Street**

**Temple Place**



# Majestic Theatre

EVENINGS AT 8.15  
Wednesday and Saturday Matinees at 2.15

SECOND AND LAST WEEK  
Beginning Monday, April 14

THE EMINENT  
AMERICAN ACTOR

## WALKER WHITESIDE

IN THE INTERNATIONAL  
DRAMATIC SUCCESS

## THE TYPHOON

*Chanbarite*  
TRADE MARK

VARNISHES  
YACHT WHITE  
METAL POLISHES

can be depended upon, and you know where  
to find us. They cost less than most  
of equal merit

**MARINE HARDWARE**

and a full line of

**Hardware, Cutlery  
and Tools**

**Chandler & Barber**  
124 Summer St., BOSTON

Phone, Main 1658, Dept. M

*Skin Beauty*  
*Purity and Health*



*Enhanced by*  
*Cuticura Soap*

And Ointment. 'To maintain the purity and beauty of the complexion, the health of the scalp and hair, the softness and whiteness of the hands and nails, Cuticura Soap, with occasional applications of Cuticura Ointment, is invaluable. No other emollients do so much and cost so little.

BEGINNING MONDAY, APRIL 21

Fourth Week of Success

The De Luxe Musical Event of  
the Season

MR. ARTHUR HAMMERSTEIN PRESENTS

# EMMA TRENTINI

IN A NEW COMEDY OPERA

## THE FIREFLY

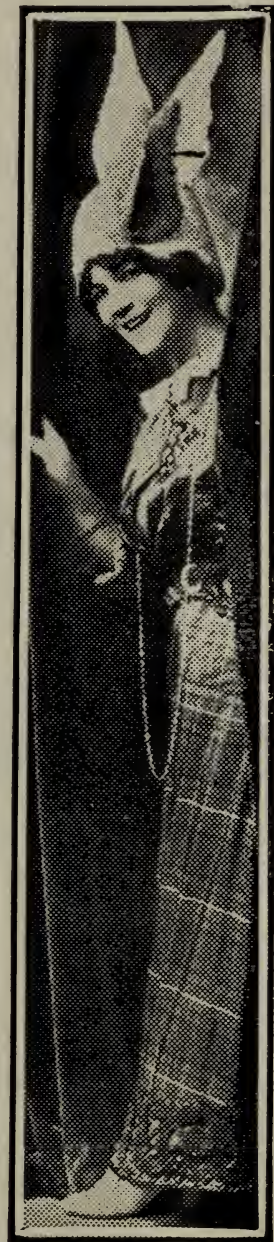
Book and Lyrics by Otto Haurbach

Music by Rudolf Friml

With the Entire Original Company and  
Production Intact

DIRECT AFTER A SEASON OF  
TWENTY-FIVE WEEKS IN NEW YORK

Chorus of Sixty-Five  
Orchestra of Thirty-Five



EMMA TRENTINI

Prices—Nights and Saturday Matinees, 50c. to \$2.00

Popular Wednesday Matinee, 50c. to \$1.50





Have You  
a Sweet Tooth?

**Foss**  
*Quality* TRADE MARK  
and **Premiere**  
**CHOCOLATES**

H. D. FOSS & CO. BOSTON.

ON SALE WHERE QUALITY IS APPRECIATED

## OPERA GLASSES



Black Enamel  
and Leather  
Finish, High-  
Grade Lenses.  
Prices, \$5.00  
to \$20.00

Black Aluminum  
and Leather  
Finish, Finest  
Lenses.  
Prices, \$13.00  
to \$40.00.

## PINKHAM & SMITH COMPANY

Makers of the Best Spectacles and Eyeglasses

Back Bay Store  
288-290 BOYLSTON ST.

Down Town Store  
13½ BROMFIELD ST

# Millinery

Smart and Exclusive  
Models in

Ladies' Tailored Hats  
also  
Informal Wear and  
Dress

Prices \$10 to \$20

## Jackson & Co.

126 TREMONT STREET  
Opp. Park St. Church and Subway Exits

# Diamonds

## PEARLS

## PRECIOUS STONES

HIGHEST  
GRADE

REASONABLE  
PRICES

# Smith Patterson Co.

Diamond Merchants

52 Summer Street

# 1913

# JACKSON

# 1913



## SULTANIC, \$2650

Seven-passenger six-cylinder touring car, with electric lights, electric starter, and full equipment. 138-inch wheel base, 36 x 4 ½ tires.

### JACKSON MOTOR CAR CO.

821 BOYLSTON STREET

Tel., B. B. 1353



# OSTRICH FEATHERS DYED, CLEANSED or CURLED

Old Feathers Made New by the Addition of New Tops

The Method art of reconstructing New Feathers from old ones was originated by us, and at small expense you may have beautiful French Plumes made from your old ones, no matter how badly worn. We can dye, cleanse or curl your plumes so that they will look as well as new.

The fact that we are the pioneer firm in Boston, specializing in OSTRICH FEATHER WORK, having been in business for over thirty-three years, assures you better work and lower prices than elsewhere.

## H. Methot Ostrich Feather Co.

53 TEMPLE PLACE, "Sign of the Golden Ostrich"  
59 TEMPLE PLACE, Blake Building, Elevator

NEXT WEEK

FOURTH SUCCESSFUL WEEK

# EMMA TRENTINI

in "THE FIREFLY"

The return of the delightful prima donna, Emma Trentini, in her new comedy opera success, "The Firefly," has been received with an appreciation that bespeaks the wonderful esteem with which this most charming of all prima donnas in light opera is held by theatregoers in this city.

And the reception accorded was merited, for never has the vivacious little song bird been so happily cast, from every angle, as she is in the title role of "The Firefly," for which Rudolf Friml wrote the delightful music and Otto Hauerbach invented its amusing story.

"The Firefly" gives Emma Trentini excellent opportunity for the display of the crystalline purity of her brilliant voice. Some one has described Trentini as "the little devil of grand opera." She is more now. She is the little goddess of light opera in "The Firefly." And after one listens to its melodies sung as only a Trentini can sing them it proclaims her latest comedy opera the greatest of her career in light opera.

It is also good to note that the same company which was seen in New York was brought here intact. Among the principals of this organization are such well-known players as Melville Stewart, Roy Atwell, Craig Campbell, William Wolf, Sammy Lee, Nina Morgana, Audrey Maple, Katherine Stewart, Ruby Norton and a large chorus of fascinating beauty, voice and great physical charm.



## Our Beautiful Photographs of Children are Becoming Known Throughout New England

They can be made either at the studio or your home, regardless of distance. If you are interested, we shall be glad to let you know the next time we are in your town.

There is no extra charge over our regular studio prices for this service anywhere.

### LOUIS FABIAN BACHRACH

Phones, 4155, 4156, Back Bay 665 BOYLSTON STREET

# HART SCHAFFNER & MARX

## GOOD CLOTHES



---

You men who go to the Tailors should see these fine Clothes. The Best Made and a saving of \$10 to \$15.

**Suits \$18 to \$35**  
**Overcoats \$20**  
**and upwards**

We can't say too much about these clothes. For Style, for Models, for Fabrics they are the very Best.

---

Copyright Hart Schaffner & Marx

# The Continental

The Store of Quality and Service

651-657 Washington St. Cor. Boylston St.



# BOYLSTON NATIONAL BANK

*ESTABLISHED 1845*

CORNER BEDFORD & CHAUNCY STS. BOSTON.

## OUT-OF-TOWN PATRONS

This bank gives special attention to the accounts of its out-of-town patrons. We are favored with the business of a large number of people residing in outlying communities who appreciate the complete facilities afforded as well as the convenient location of our banking rooms at 41 Bedford Street.

**CAPITAL, SURPLUS & PROFITS \$ 973,000.00**

## The J. M. Shock Absorber



**SHOCK  
ABSORBER**

**AVOIDS JOLTING**

The Real Solution of  
Automobile Comfort.

It Will Save You Over  
30 to 40% on Tires.

---

There are over 150,000 in use in France  
and United States. Doesn't that strike  
you as a pretty good indorsement?

---

**EDWARD KNAUSS, DISTRIBUTOR**

222 ELIOT STREET

BOSTON, MASSACHUSETTS

# THE WORLD-RENOWNED



## PALMIST FLETCHER

(Late of New York City)

Do you hesitate as to which course to pursue? Are you making a change in your business or your home? Do you wish to know all about yourself and those who are about you? Are you unhappy or discouraged? Do you wish to succeed in your undertakings? Have you any matter of interest which you wish made clear? Then consult

## FLETCHER

the greatest living adviser upon all human affairs. He is the one who can help advise and guide you. There is always a way out, if you will only take it; and no man is so wise but what he can learn more, if he will.

Years of study, travels in foreign lands, and the possession of powers that have baffled the whole world, have placed him in the enviable position he fills with so much credit.

A leaf tells the story of the tree to the botanist; your hand reveals you **to him**. There is no mystery, no writing questions,— just the truth about yourself, your affairs, and all that relates to you.

Florence Marryatt, the great writer, says: "Fletcher saved me mistakes, and his prophecies are all fulfilled"; you will say the same thing should you consult him. He is endorsed by the public and press in both Europe and America.

Daily, also Wednesday Evenings

74 Boylston Street, Boston, Mass:

Opposite Hotel Touraine

'Phone Oxford 2028



# ANNOUNCEMENT

OPENING OF A NEW DEPARTMENT

## Ready-to-Wear Hats

Women

Misses

Children

MEDIUM AND SMALL-SIZED SHAPES IN TAILORED HATS WILL BE THE VOGUE. ORIGINAL DESIGNS SMARTLY TRIMMED

### WERNER-PAZOLT CO.

Furriers—Ladies' Hatters

458 BOYLSTON STREET, BOSTON



**THE  
THORNDIKE  
HOTEL**

BOYLSTON STREET    OPP PUBLIC GARDEN

**BOSTON**

**AFTERNOON TEA  
AT 4 O'CLOCK**

Special  
After-Theatre Suppers  
\$1.00 and \$1.50 per cover

A New Entrance to  
The Olde English Room  
FROM PARK SQUARE

Restaurant Service till 12.30



*Their Age Is But a Day*

**St. Clair's**  
*Chocolates  
and Caramels*

Acknowledged Standard  
for Rare Quality, Purity  
Delicate Flavor and Variety  
Made from Choicest Ingredients

SHOPS  
144 Tremont St., 55 Temple Pl.  
BOSTON  
321 Westminster St., Providence, R. I.  
Sent by Mail or Express Anywhere

# The Copley-Plaza Hotel

**AFTER THE THEATRE**



**An After-Theatre Supper De Luxe Served in the  
Main Dining Room and the Tea Room  
\$2.00 per Cover**

**The acme of hotel service and excellent  
cuisine combined with reasonable prices**

---

**We have a number of suites for permanent guests at moderate prices**

**FRED STERRY, Managing Director**

**J. C. LaVIN, Manager**



# Best Music Rolls

for all Player-Pianos using  
standardized music

*Largest Stocks*  
*Reliable Service*  
*Prompt Delivery*

Visit our Demonstration Rooms  
and hear the latest music



## M. STEINERT & SONS CO.

STEINERT HALL, 162 BOYLSTON STREET

---

## Banking Service

Banking service means more than the mere acceptance of an account.

Our primary object is to satisfy each individual depositor and, as far as consistent with good banking, to carry out his desires.

The service of the National Rockland Bank is based on fair and courteous treatment to every patron. Judicious and intelligent investment of its funds assures full protection.

# The National Rockland Bank

OF ROXBURY



# CAMEO BISCUIT

"Three layers of goodness"

Two little finger shaped biscuit  
held together with a layer  
of rich creamy filling.

NATIONAL BISCUIT  
COMPANY





PROGRAM OF THE PLAY

WEEK OF APRIL 14, 1913

EVENINGS AND SATURDAY MATINEE

At the Wednesday Matinee Miss NINA MORGANA will appear in the title role  
Prices 50c. to \$1.50

Mr. ARTHUR HAMMERSTEIN Presents

# EMMA TRENTINI

IN A NEW COMEDY OPERA

## “THE FIREFLY”

Book and Lyrics by Otto Hauerbach

Music by Rudolf Friml

### OUR COMPLETE STOCKS SPRING and SUMMER APPAREL

POINT the way to economies and satisfactory selection as never before. Styles, Fabrics, Designs and Patterns have been selected with a professional knowledge of Men's and Young Men's requirements, and we are sure you will appreciate our efforts in your behalf.

Benjamin Clothes  
Manhattan Shirts

Knox Hats  
Fine Furnishings

**Richardson's**

388  
Washington  
Street



*Filene's*

“What are the New Ideas in Undermuslins?”

Here are some you may see in the

FILENE  
UNDERMUSLIN SHOP

---

---

*New “Flat” Skirts.* Twenty-one styles at \$1.95. Very necessary under straight narrow gowns. Daintily trimmed with a variety of laces and embroideries.

*New slashed skirts* and new negligee skirts.

*New Bodice Covers.* These lace and net underbodices with ribbontrimmings have proven the most popular novelty in some time.

*Empire Gowns,* influenced by the high waist fashions in costumes.

*New Rest “Slip Overs.”* Short chiffon lace-trimmed sacques to wear over the gown. Caps to match.

*New Net Empire Princess Slips.* For Sheer Summer Gowns.

(Third Floor)

William Filene's Sons Company  
Specialists in Undermuslins



# PROGRAM

## CHARACTERS.

(In the order of their appearance)

Sybil Vandare .....	Vera De Rosa
Suzette .....	Ruby Norton
Pietro .....	Sammy Lee
Geraldine Vandare .....	Audrey Maple
Jack Travers .....	Craig Campbell
John Thurston .....	Melville Stewart
Mrs. Oglesby Vandare .....	Katherine Stewart
Jenkins .....	Roy Atwell
Herr Franz .....	William Wolff
Nina .....	Emmz Trentini
Antonio Columbo .....	Irene Samsel
Correlli .....	S. Sobelson

## OTHER CHARACTERS BY

The Misses—Virginia Steinhardt, Eileen Gerald, Ethel West, Mona Harmon, Hulda Morton, Violette Von Nichols, Mattie Vance, Erne Eckhardt, Alvina Dare, Marion Lee, Marie Granville, Grace Noble, Louie Ducey, Bessie Bourne, Neva Cassini, Bessie Stivers, Frankie Farrell, Margie Melvin, Vera Ling, Florence Reed, Katherine Ardavini, Viola Garrick, Amelia Wurtz, Katherine Hauser, Edith Bonnett, Florence Williams, Alice Rose, Marion Donn, Edith Whitney, Mary Cassel, Elsie Artz, Lucy Cotton, Blixie Morrie.

Messrs.—Stanley Sobelson, Edward Agnini, William Stanz, William Brown, Max Silver, James Johnson, Raphael Odierno, Walter Burke, George Brugger, Robert Halstead, Edwin Archer, Arthur Spencer, Alex. Sparks, Russell Brown, Ernest Band, Bernard Tieman, Louie Linton.

---

The Steinway, Hume, Weber and Jewett Pianos used at this theatre exclusively are furnished by the M. Steinert & Sons Co., Steinert Hall, 162 Boylston Street.

---

**MEYER  
JONASSON & CO.**

TREMONT AND  
BOYLSTON STS.



**Misses' Suits**

**Uncommon Models**

designed on

**Youthful Lines**

**\$18.75 to \$82.50**

“CAIDMUIR”  
Burberrys and Aquascutum Coats

SUITABLE FOR  
Motoring, Storm, and Street Wear

**COLLINS & FAIRBANKS  
COMPANY**

383 WASHINGTON STREET — BOSTON



“THE HOUSE OF GOOD CHEER”



Take a five-minute walk for an  
appetizer and lunch at the New  
American Rathskeller. Good music,  
comfortable booths, popular prices.

SPECIAL

**BREAST OF GUINEA CHICKEN**

A la Rathskeller, for two persons, \$1.50.

Venetian Room Table d'Hote, \$1.00

“OPEN UNTIL MIDNIGHT”





# PAGE & SHAW CANDIES

The Candy of Excellence. Packed in Boxes at \$1 per Pound.

Sold in All  
Principal Cities  
and at Our  
Retail Stores

9 WEST STREET.....	BOSTON, MASS.
18 STATE STREET.....	BOSTON, MASS.
439 BOYLSTON STREET.....	BOSTON, MASS.
254 ESSEX STREET.....	SALEM, MASS.
50 CENTRAL SQUARE.....	LYNN, MASS.
553 FIFTH AVENUE, Near 45th Street.....	NEW YORK CITY
Booth in corridor, Empire Building, 71 BROADWAY.....	NEW YORK CITY
101 SOUTH 13th STREET.....	PHILADELPHIA, PA.
8 SOUTH LASALLE STREET.....	CHICAGO, ILL.
610 ST. CATHERINE STREET, WEST.....	MONTREAL, CANADA

## PROGRAM

### SYNOPSIS OF SCENES

PROLOGUE—Recreation Pier, Foot of 23rd Street, New York.

ACT I —The Vandare Estate, Bermuda. Three weeks later.

ACT II —The Vandare Home, New York. Three years later.

Time—Present

Augmented Orchestra under the direction of  
Signor Gaetano Merola

The Incidental Dances arranged by Signor Albertieri

Special Dances arranged by Sammy Lee

Scenery—PROLOGUE—by Reisig-Dove Studios

ACTS I and II by P. Dodd Ackerman Studios

Costumes and Dresses designed by W. Matthews and executed by  
Madame Freisinger

Uniforms, etc., by Warnock & Co. Shoes by Capezio

Draperies by Arnold Constable Co.

Knabe Piano used exclusively by the Firefly Company

Furniture by Bon Marche, Paris

Floral Decorations by General Flower Company

Properties by Armstrong

# A. STOWELL & CO. INC.

## DIAMOND

Pendants  
Brooches  
Rings  
Pearl  
Necklaces  
Bracelets



## JEWELRY

Gold Beads  
Locketts  
Watches  
Links  
Stick Pins  
Lorgnettes

## 24 WINTER ST.

## BOSTON.

# *Fashionable Spring Apparel*

---

---

Modish  
Spring  
Suits

---

New  
Millinery  
Creations

---

Widest  
Assortments  
of  
New Spring  
Waists,  
Neckwear,  
Gloves,  
Hosiery

---

*Latest Gowns  
from Paris*



*F. J. Slattery Co.*

154-155-156 TREMONT STREET

*Opposite Boston Common*



# PROGRAM

## MUSICAL NUMBERS

### PROLOGUE

1. Opening Chorus—"A Trip to Bermuda."  
Vera De Rosa, Ruby Norton, Sammy Lee and Chorus
2. "He Says Yes, She Says No!"..... Audrey Maple, Craig Campbell and Chorus
3. "Call Me Uncle".....Melville Stewart, Vera De Rosa and Chorus
4. "Love Is Like a Firefly"..... Emma Trentini
5. "Something"..... Ruby Norton and Roy Atwell
6. "Gianina"..... Emma Trentini
7. Finale..... Ensemble

### ACT I

8. Opening Chorus—"Sapphire Seas"..... Vera De Rosa and Ensemble
9. "Tommy Atkins"..... Emma Trentini and Ensemble
10. "Sympathy"..... Audrey Maple and Melville Stewart
11. "A Woman's Smile"..... Craig Campbell
12. "De Trop"..... Roy Atwell, Sammy Lee, Ruby Norton and Chorus
13. "We're Going to Make a Man of You,"  
Emma Trentini, William Wolff, Craig Campbell and Melville Stewart and Roy Atwell
41. "The Beautiful Ship from Toyland"..... William Wolf and Male Chorus
15. "When a Maid Comes Knocking at Your Heart"  
Emma Trentini, Craig Campbell and William Wolf
16. Finale..... Ensemble



# Chamberlain Hats \$3<sup>00</sup>

**BEACONSFIELD  
STYLE AND QUALITY**

**GUARANTEED BY THE BEACONSFIELD  
TRADE-MARK IN OUR DERBYS  
AND SOFT HATS**

The Derby here represented we call  
**THE BROOKLINE. The Soft,  
"RIGHTO"**

**HATS**

**HATS and HABERDASHERY**

**637 WASHINGTON STREET**  
COR. OF BOYLSTON

**659 WASHINGTON STREET**  
UNDER THE GAITY THEATRE

# Lightweight Overcoats

READY FOR IMMEDIATE WEAR

Our Spring Models include garments for business and dress wear and specially designed Overcoats for travelling and automobiling.

**\$20 up**

English Top Coats of special fabrics and design.

## RAINCOATS

The "Aceromac" is a beautiful English Raincoat, very firm and light.  
For men and women

**\$30**

Rubberized Raincoats, \$5 to \$25.

Cloth Raincoats, Cravenettes, Gabardines, etc., \$15 to \$35.

## MACULLAR PARKER COMPANY

400 WASHINGTON STREET

---

# WETHERN'S



For Smart Hats  
Veilings, Ribbons, etc.  
Our Styles are ever  
changing  
To-day's showing  
Beautiful Hats  
Flower Trimmed

TEMPLE PLACE . . . . . WEST STREET



# FIELD & COWLES

85 WATER STREET, BOSTON

NEW ENGLAND MANAGERS

ROYAL INSURANCE CO., Ltd., Liverpool, England

## INSURANCE OF EVERY DESCRIPTION

THE LEADING COMPANY OF THE WORLD

### PROGRAM

#### ACT II

17. Opening Chorus.....Ensemble  
18. "An American Beauty Rose".....Melville Stewart and Ensemble  
19. "The Latest Thing from Paris".....Sammy Lee and Ruby Norton  
20. "Kiss Me and 'Tis Day".....Emma Trentini  
21. Finale.....Ensemble

(The Music of "The Firefly" published by G. Schirmer & Co., New York)

Go to Beautiful Bermuda by S. S. Bermudian

Full information obtainable from

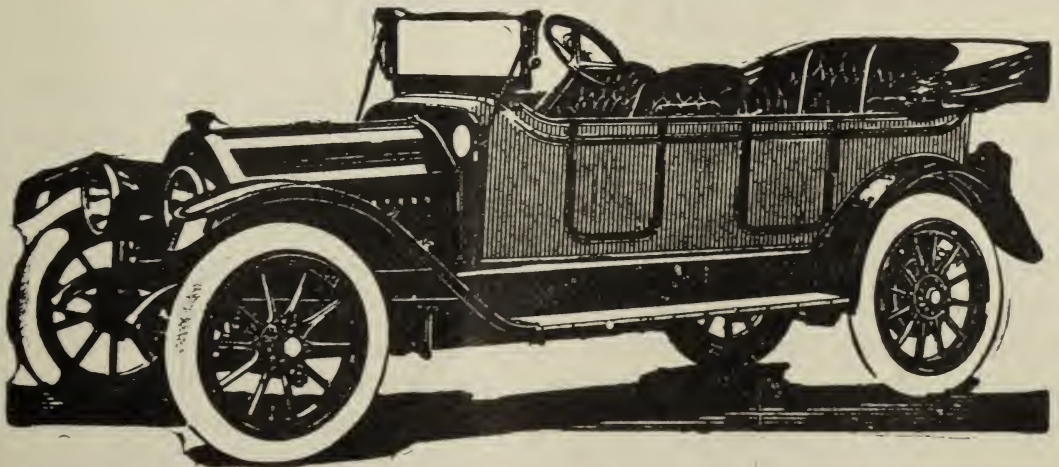
Bermuda Line 29 Broadway New York City

Jacques Coini, Stage Director

Mr. George Blumenthal, General Representative for Mr. Hammerstein

**IMPERATIVE NOTICE TO PATRONS.**—The management will not be responsible for any garments unless delivered to the checkroom and a check received therefor. The patrons of the theatre are requested to deliver their garments only to the person at or in charge of the coatroom, not to ushers or any other employees.

## PREMIER "Little Six"



Completely equipped with' Pneumatic Starter and Generator  
Electric Lighting System.

### \$2785

PREMIER MOTOR CAR CO. of New England  
652 BEACON STREET, BOSTON, MASS.

ESTABLISHED 1858

TELEPHONE, BACK BAY '3216

# *Cold Storage for Furs* *Woolens and Rugs*

**BEST SERVICE IN BOSTON**

FREE AUTO COLLECTION IN BOSTON  
AND SUBURBS

**EDWARD F. KAKAS & SONS**

364 Boylston Street

*Our Only Store*

## **FISHER HILL**

The ideal spot in the territory which surrounds Boston for those wanting to live under their own roof-tree is Fisher Hill, Brookline, a choice community of individual houses in a model town. It is reached on the Boston & Albany circuit by train to Beaconfield Station, in 11 minutes from Trinity Place and 15 from South Station, and by Beacon Street electrics at Dean Road, which on completion of the Boylston Street subway will be 20 minutes or less from Park Street. The combination here found of quiet, the very best of neighbors, just the right kind of schools, most attractive surroundings and ease of access is rare. A man who not long ago bought a lot and built his house, for which by the way he was offered a profit of three thousand dollars soon after it was built, recently said, "This is an ideal spot in which to live." Land may be had for single houses only at from 30 to 45 cts., and honest new houses at from \$10,000 to \$20,000 on terms of payment which will meet the convenience of a good neighbor.

*Plans and prices of John D. Hardy, 10 High St., Junction Summer, Boston*



# COAL

Is now at the lowest Price for the year

FILL BINS NOW  
and SAVE MONEY

Order at these Stores and Save More Money by getting

## Legal Stamps

HOUGHTON & DUTTON CO.,  
Tremont and Beacon Sts.

EVERYBODY'S STORE,  
90 Tremont Street

W. & A. BACON,  
2175-2193 Washington St.

J. T. CONNOR CO.  
100 Stores

F. N. JOSLIN & CO.,  
Malden Sq., Malden

SCARRY'S DEPT. STORE,  
Field's Corner, Dor.

J. H. CORCORAN & CO.,  
587 Mass. Ave., Cambridge

D. T. CASS,  
308 Blue Hill Avenue, Roxbury

H. H. CHANDLER & SON,  
53 Main St., Charlestown

SCARRY'S DEPT. STORE,  
Brookline Village, Brookline

E. L. PILSBURY & CO.,  
305 Main St., Charlestown

REDDICK'S DEPT. STORE,  
639 River Street, Mattapan

H. A. SKIDMORE,  
318 Broadway, Chelsea

LUCE & CO.  
Medford Square

W. H. MARBLE,  
51 Wyoming Ave., Melrose

GILCHRIST CO.,  
Washington and Winter Streets

WOLF'S "MY CLOTHIER,"  
Hanover and Portland Streets

MURPHY BROS. CO.,  
S. Boston's Leading Store

WALCOTT & CO.,  
Central Sq., E. Boston

PHILBRICK & CO.,  
Everett Square

W. E. MERRILL,  
669 Mass. Ave., Cambridge

PARKE SNOW,  
Davis Square, West Somerville

R. J. FARRELL,  
Union Square, Somerville

M. E. KNIGHT,  
109 Harvard Street, Dorchester

H. H. HUNT,  
Roxbury Crossing

H. O. CURRELL,  
516 Main Street, Charlestown

CLEMENT'S EMPORIUM,  
537 Main Street, Melrose

W. H. STEVENSON,  
128 Washington Street, Quincy

LEGAL PREMIUM COMPANY,  
496 Washington Street, Boston



# Stork Sheeting

Promotes Baby's comfort and health, and saves the mother work.

Stork Sheeting is a dainty, waterproof fabric, white, light, soft and pliable. Invaluable for Baby's crib, for the sick room, and for countless household purposes.

By the yard

36 inches wide, light or heavy weight, \$1.00  
54 inches wide, heavy weight, 1.50

Buy of your dealer. If he cannot supply you, write to us.

**THE STORK COMPANY Dept. V BOSTON**

Also makers of STORK Pants, STORK Baby Shoes  
and Baby Garments



# L. P. HOLLANDER & CO.

## *Women's Tailored Suits*

*\$45.00 and Upwards*

To avoid alterations as much as possible, all of our garments are specially fitted on lifelike forms. Lines and measurements are so exact that usually alterations are very few, and in many cases there are none at all.



## LADIES—ATTENTION!

If you use **Klein's Ylang Ylang Cold Cream** you will always have a good complexion. It is the finest cream for chapped hands and rough skin on the market. Used exclusively by the **Theatrical Profession**.

Sold at all the leading drug stores and department stores. **1 oz. jar, 10 cents.**  
**4 oz. jar, 25 cents.** Guaranteed not to grow hair on the face.

**MANUFACTURED BY PAUL KLEIN CHEMIST.**  
**CORNER TREMONT AND BOYLSTON STREETS . . . BOSTON**

# "The Best in Bedding"

**Used Where  
Quality  
Is Essential**



**Used Where  
Durability  
Is Desired**

**We Invite your Inspection of our new Fall line of  
Exclusive Patterns in Brass Beds and Bedding**

**Designs and Materials not to be found elsewhere**

**O. D. Baker & Co.** Sudbury St., Cor. Friend  
Boston, Mass.

## **SPIRELLA CORSET SHOP**

M. W. WILLEY, New England Manager

Berkeley Bldg., 420 Boylston Street

Come and see our attractive models, built on lines of the utmost grace and beauty, and realizing the latest tendencies of fashion. The wonderful flexibility of the Spirella boning adapts the Spirella corset to the best expression of present modes. Every corset is made to order, fitted here or in your own home by our expert corsetiere.

Telephone, Back Bay 244

## **CONSERVATIVE CLOTHES**

— ARE THE CHOICE OF —  
**WELL-DRESSED MEN**

Men of taste and discrimination seek to avoid the bizarre, as well as the commonplace, in the selection of their everyday apparel. The manufacturer of ready-made clothing tries to attract by freakish fashions, by oddities of pockets and buttons.

High-class merchant tailoring depends rather on first quality of woolens, distinctive cutting, draping and finish that makes each garment different from any other and built for the wearer and no other.

We have been high-class merchant tailors for twenty-three years. Our Suits and Overcoats at \$35.00 are distinctly different.

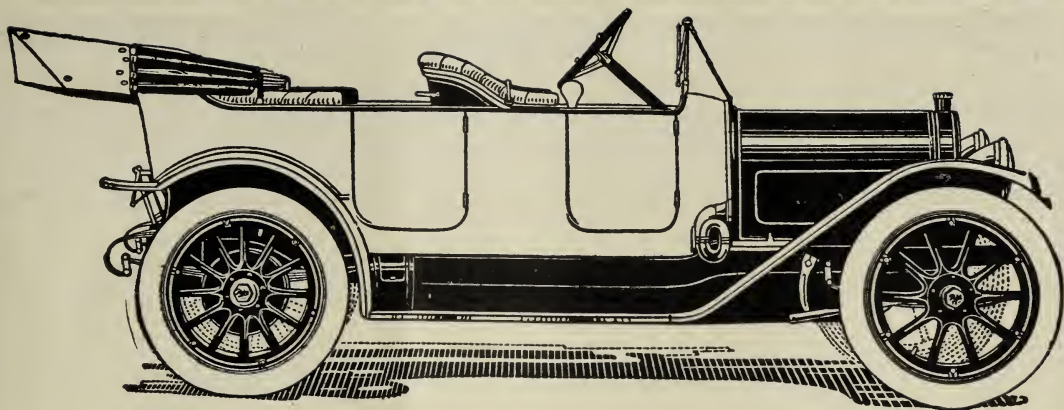
**ALLAND BROS.,** Men's Tailors

29 MILK ST., BOSTON

cor. Hawley, Street Floor

Estab. 23 Years





**\$2250**

**POPE Cars Are Made to Satisfy**

THEY ARE A RE-ORDER CAR — ASK ANY USER

**POPE-HARTFORD CO. of BOSTON**

**COPLEY SQUARE**

PHONE, B. B. 6050

# Club Cocktails

Simply strain through cracked ice, and serve



*At all good dealers.*

Delectable liquors mellowed by age and mixed to exact proportions.

*Martini (gin base) and Manhattan (whiskey base) are the most popular.*

**G. F. HEUBLEIN & BRO., Sole Proprs.**  
**Hartford      New York      London**



**CASTLE SQUARE HOTEL BOSTON**  
 TREMONT ST.    CASTLE SQ.    CHANDLER ST.    OFFICE  
 Charles E. Sleeper, Manager.    **EUROPEAN PLAN**

**European Plan**

Over One Mile Frontage Outside Rooms.

The only Hotel of its size in the World having a

**Private Bath With Every Room**

Long Distance Telephone in each room.

**First-Class Cuisine and Service**

50 Single Suites with private bathrooms, \$1.50 per day (for one person).

100 Double Suites with private bathrooms, for two persons, \$2.00 per day.

350 Double Suites, Alcove Chamber, private bathrooms, \$2.50 and \$3.00 per day.

Nothing Higher.

Baggage Transferred Free.

# Oliver Ditson Company

## Send or Bring Us Your Old Damaged Musical Instruments for Repairs



**I**NSTRUMENTS that have been cast aside and looked upon as beyond redemption can be carefully repaired and many times returned to the owner as good as new. Our *Repair Shops* are finely equipped, and all work shows the touch of our experts. Estimates cheerfully given.

We take pleasure in announcing at this time that

**MR. HENRY F. SCHULTZ**

expert Violin maker and repairer, has joined our staff, and he would be pleased to welcome his Musical friends at our shop.

**OLIVER DITSON COMPANY**

150 Tremont Street, Boston, Mass.

**BOSTON NEW YORK**



## CHIROPODY

Care of the Nails a Specialty—Appointments made—Perfect Asepsis Observed

**M. CAMERON MACDONALD**

*CHIROPODIST*

171A Tremont St., Boston  
Telephone, Oxford 2791 M

Suite 30, Herald Building  
Opp. Boylston Street Subway

# SAUNDERS & GLASER

COPYISTS

French Model Gowns

Customer's Own Material

Prices \$10.00 up

74 BOYLSTON ST., BOSTON, MASS., Suite 315

Our designers and cutters from Paris and Berlin

# THEATRE TICKETS. BURKE

ADAMS HOUSE    Telephones Oxford 935-942

A SUPERB ART CREATION

THE Stieff PIANO

Awarded highest American and European Honors in Competition with the World's Best Pianos

CHAS. M. STIEFF 122 Boylston Street.

**HERRICK** Call Back Bay 2328 **TICKETS**  
 Connecting  
**COPLEY SQUARE** 5 Telephones **ALL THEATRES**

**PENNELL, GIBBS  
 & QUIRING COMPANY**

**Decorators**

**15a BEACON STREET, BOSTON**

Tickets all Theaters

**CASHIN'S**

**PARKER'S and YOUNG'S**

'Phone 6973 Main

**"FACTORY TO WEARER"**  
**THE SPHINX HAT**  
**\$2.00**  
  
 OUR MARK OF LASTING QUALITY  
**THE MALLORY CRAVENETTE**  
**\$3.00**  
**30-BOYLSTON-ST-BOSTON**

**FABERY'S  
 SALTS**

**Your Health**

Improved by using  
**FABERY'S SALTS**  
 for Stomach, Liver,  
 Bowels and Kidneys.

**DRUGGISTS  
 AND**

**FABERY'S  
 PHARMACY**

272 Tremont St.

Cor. Hollis.

**HAVE YOU A-  
 BROKEN RIB?**  
**REPAIRING** A **RECOVERING**  
**SPECIALTY**  
**J.T. MANNING** UMBRELLA MFR.  
**43 WINTER STREET.**

OVER HOMER'S JEWELRY STORE



**PATRICIAN—One of 60 Styles—10c. Linen Collar**

Why should you pay 15c for a cotton collar when you can buy my famous linen collar for **10c**

Send for Collar Catalogue.

Every Day is Value Day at

**Posner's**

The Men's Store  
**SCHOOL STREET**



# THE FIREFLY

is a late show. It is best to reserve a table and order from the  
Wine List before theatre or during intermission.

## HOTEL HOLLIS NEXT TO SHUBERT THEATRE

Best of Everything cooked and served properly at all times. Theatre  
parties from 10 to 100, \$1.00 a plate and upwards. Pleasant environment.

### S. A. LINCOLN CO.

*Publishers*

S. A. LINCOLN

T. F. GRIFFIN

#### BOSTON OPERA PROGRAM

*Shubert  
Majestic  
Globe* } *Theatre Programs* 100 Boylston St.  
Boston, Mass.  
Telephone, Oxford 3

FRIDAY AFTERNOON, APRIL 25th, BOSTON THEATRE

# ACTORS' FUND BENEFIT

## MISS GERALDINE FARRAR

By Courtesy Metropolitan Opera Co. and Charles A. Ellis

VOLUNTEERS FROM ALL THE THEATRES IN BOSTON

HOLLIS, Otis Skinner and "Kismet" Co.

COLONIAL, "Chocolate Soldier" Co.

PLYMOUTH, The Manchester Players

PARK, Edward Abeles and "Officer 666" Co.

CASTLE SQ., John Craig and Mary Young

SHUBERT, "The Firefly" Co.

TREMONT, Aborn English Opera Co.

MAJESTIC, "The Bird of Paradise" Co.

BOSTON, Maclyn Arbuckle and "Round Up" Co.

B. F. KEITH'S Theatre

Acts from LOEW'S ORPHEUM, GAIETY, and CASINO

Special Feature from New York "TABLOID HAMLET"

A Burlesque as recently given at a Fund Benefit in New York

SEAT SALE, THURSDAY, APRIL 17th

# Attractions Now Playing Shubert Theatres in New York

## HIPPODROME

6th Ave., 43d-44th Sts. Daily Mats. 2, Evenings 8

### CYPSY LIFE PLUNGING HORSES

Mammoth New Circus

## 48th STREET THEATRE

Just east of Broadway

Evenings 8.15 Mats. Thur. and Sat.

### THE LADY FROM OKLAHOMA

With JESSIE BONSTELLE

## Maxine Elliott's Theatre

39th St., between Broadway and 6th Ave.

Mats. Wed. and Sat. Evenings 8.15

Edward Sheldon's New Play

## ROMANCE

### WINTER GARDEN

Mats. Tues. Thur. and Sat. Evenings 8

Telephone, 9260 Col's.

### THE HONEYMOON EXPRESS

With GABY DESLYS, AL JOLSON

## WEBER & FIELDS'

44th ST. THEATRE

Nine Star Revival of

### THE GEISHA

## F. Ray Comstock's Princess Theatre

### FOUR ONE-ACT PLAYS

## Manhattan Opera House

34th St. and 8th Ave. Evenings 8.15

Mats. Wed. and Sat.

The Big Drury Lane Melodrama

### THE WHIP

## CASINO

Broadway and 39th St.

Mats. Wed. and Sat.

Evening 8.10

## Gilbert & Sullivan Company

ALL STAR REVIVAL of

### THE BEGGAR STUDENT

## PLAYHOUSE

48th east of B'dway Mats. Wed. and Sat. Ev. 8.10

### Grace George

in a revival of SARDOU'S

### DIVORCONS

## COMEDY THEATRE

41st St., east of Broadway

Mats. Thur. and Sat. Evenings 8.15

### FANNY'S FIRST PLAY

By GEORGE BERNARD SHAW

## LYRIC

42nd St., west of Broadway

STAR CAST PRODUCTION

### ROSEDALE

## 39th STREET THEATRE

39th St., near Broadway

Mats. Wed. and Sat. Evenings 8.15

### THE FIVE FRANKFORTERS

PURE FOODS

PURE WHISKIES

FOR YOUR HEALTH'S SAKE  
WRIGHT & TAYLOR'S WHISKIES

# KY. TAYLOR (Blend) OLD CHARTER (Straight)

are absolutely pure, of unquestionable superiority and the highest quality. They are the connoisseur's choice, and are the finest of whiskies for most particular people.

These celebrated whiskies are sold by dealers in bottle goods at \$1.00 per full honest quart. They are also served at leading Cafés, Clubs and Hotels in Boston and throughout New England.

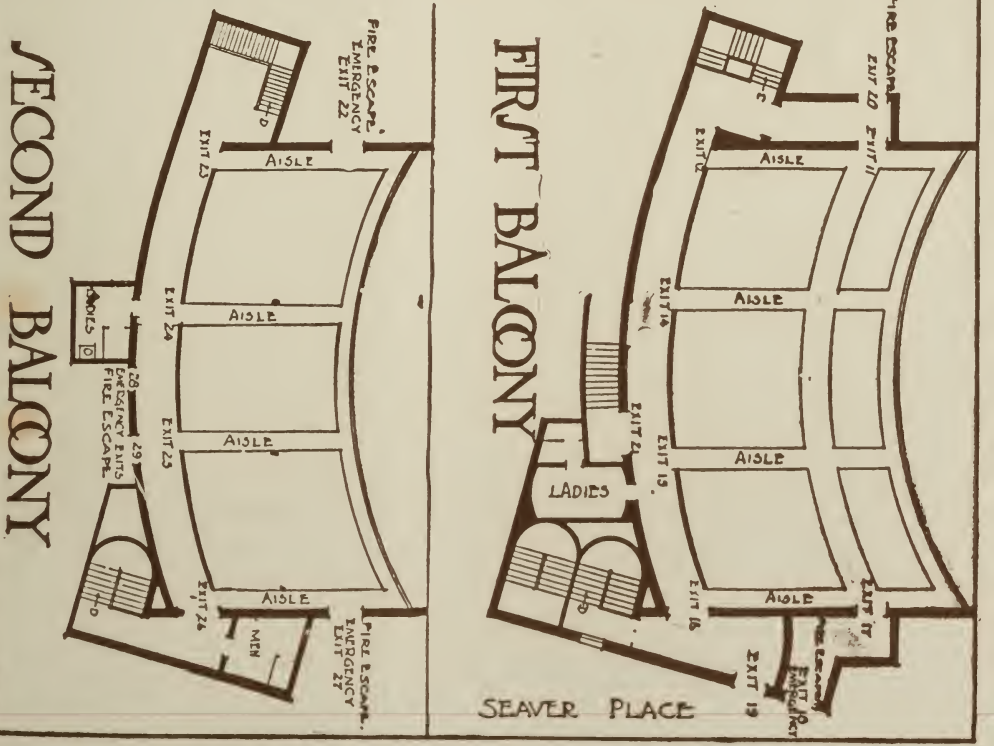
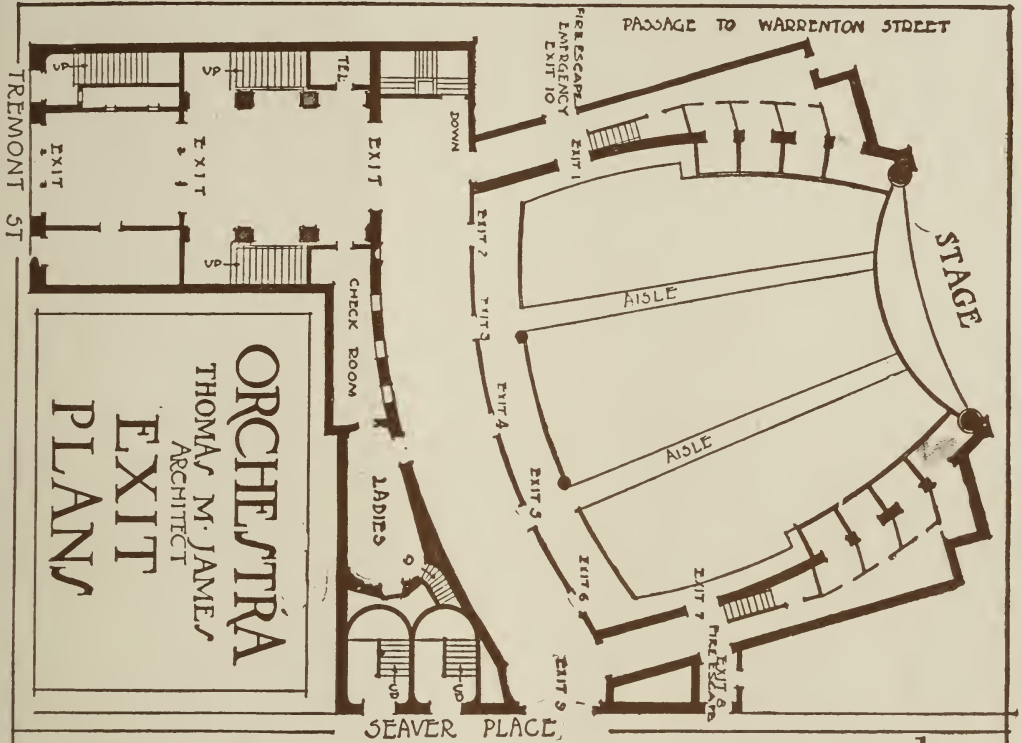
NEW ENGLAND AGENCY  
No. 1 Washington Street, Boston, Mass.

MR. HIRSHFIELD

WRIGHT & TAYLOR



# Shubert Theatre





VISITORS ARE INVITED TO OUR NEW BUILDING AT 169 TREMONT STREET, WHERE  
CONDITIONS ARE ESPECIALLY FAVORABLE FOR THOSE INTERESTED IN

## PIANOFORTES

169 TREMONT STREET  
*OPPOSITE THE COMMON*

**CHICKERING**  
ESTABLISHED 1823